

# Protects People and Saves Energy: The New Machine Protection Door EFA-SRT® MS Performance

EFAFLEX installs four of its latest door systems at Sto in Kriftel



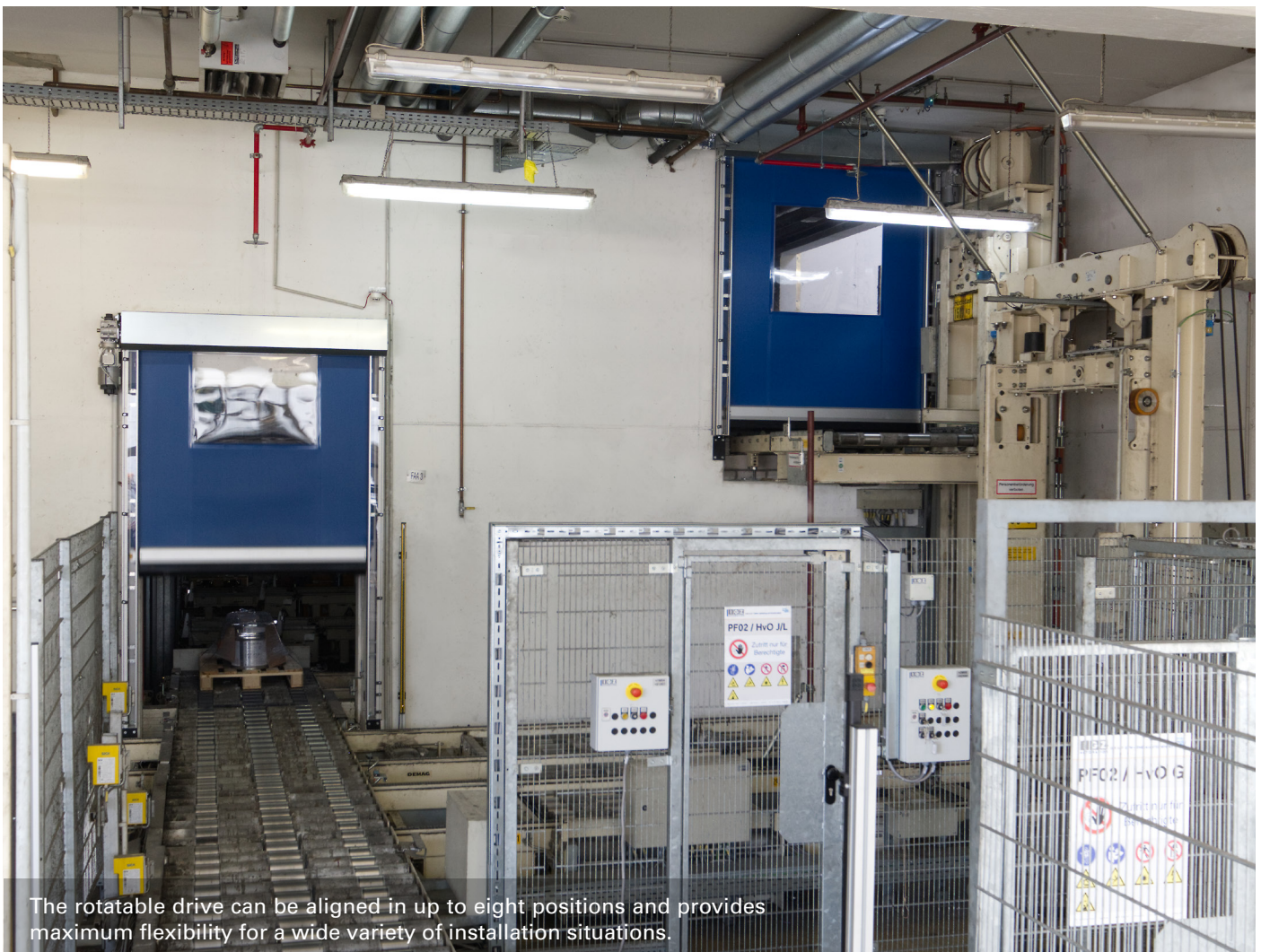
User report

The first door system was installed by EFAFLEX at Sto SE & Co. KGaA at its Kriftel site twenty years ago. The company is a leading manufacturer of products and systems for building coatings. Now, additional door systems have been ordered and installed.

The four new EFA-SRT® MS Performance machine protection doors seal off the high-bay warehouse. All storage and retrieval operations, as well as shipping, are carried out through these doors.

“We carried out a retrofit of our high-bay warehouse, meaning a comprehensive modernization,” reports Johannes Jung, Technical Administrator at the site. The warehouse software and motors were replaced. During this process, plant management also decided to install new doors. The 24-meter-high warehouse, built in 1998, previously only had fire protection doors. “Due to increased requirements for personnel safety, we now had to install door systems that prevent employees from accessing the conveyor lines inside the building,” explains Johannes Jung. “Another very important factor in selecting the new doors was their energy performance.

The warehouse itself is frost-free but cold, whereas the extension building where employees work in goods receiving, order picking and shipping is heated. The doors now reliably separate the cool and warm areas, and the energy savings are enormous.” The challenge in selecting a door manufacturer was to find a company capable of meeting both the safety requirements and the goal of reducing energy consumption. “In addition, the manufacturer had to cope with the limited space available at the warehouse openings during installation,” says the Technical Administrator. “EFAFLEX was the only company able to offer both.”



The rotatable drive can be aligned in up to eight positions and provides maximum flexibility for a wide variety of installation situations.

---

*The warehouse is frost-free yet cold, while the adjacent extension used for goods receipt, order picking, and shipping is heated. The doors now ensure reliable separation between cold and warm zones, delivering substantial energy savings.*

Johannes Jung

---



## High-performance continuous operation

The door system at the retrieval area of the high-bay warehouse completes 300 to 400 load cycles per day. In shipping, the figure is up to 300 cycles daily. The EFA-SRT® MS Performance is designed for up to 1,000,000 load cycles per year. It is ideal for areas with customer-specific requirements, as it can be flexibly adapted to individual needs. Newly developed aluminum extrusion frame profiles allow supplied add-on components and fence connections to be mounted in almost any position. Up to four limit switches can optionally be integrated into the side frames. Thanks to its optimized design, EFAFLEX's in-house technicians can install the door freestanding or wall-mounted on site within a very short time. The high-speed roll-up door EFA-SRT® MS Performance features a door line light grid in the closing plane. If the light grid detects a person or obstacle, the closing movement of the door curtain is stopped immediate-

ly before any contact occurs. This enhances safety for both people and machinery. In addition, the machine protection doors can be equipped with the Head-Safe option. This adds an extra safety light grid on the operator side in front of the closing plane, preventing the door from closing as soon as a person or obstacle is detected. The door requires very little maintenance and features, among other things, a hinged cover and removable cable covers, which significantly simplify servicing and maintenance. The door curtain is made of flexible PVC. The drive system can be individually configured and, depending on the version, rotated in 45-degree increments. Transparent side covers also make it possible to integrate LED strips into the frames, enabling a traffic light function. The door is available in standard sizes up to 3,500 mm in width and 3,500 mm in height.

## Professional and close to the customer

Planning and execution at Sto were complicated due to the initial conditions described. "When it comes to installation and all preparatory work, EFAFLEX is highly professional," says Johannes Jung. "The field service team even visited several times, and a number of adjustments had to be

made on our side before installation could begin. It was a real Sisyphean task." EFAFLEX also operates a customer service location in Raunheim practically just around the corner ensuring fast support.

## Connected thinking and action: Company information Sto

As an internationally leading manufacturer of products and systems for building coatings, the 60 employees at the Kriftel plant produce between 80,000 and 90,000 tons of dry mortar annually. From Kriftel, epoxy resin products such as industrial flooring from the Rüsselsheim plant are also delivered to sales centers. Under the umbrella of the Sto Group, the parent company, subsidiaries and distribution partners work closely together and share their experien-

ce. Strong specialist expertise, interconnected thinking and action, and the independence of individual business units foster innovative ideas. At the end of 2023, the Sto Group was represented in 37 countries with 50 of its own operating subsidiaries and their facilities. The Stotmeister owner families continue to stand by the company and now determine its strategic direction via the Supervisory Board.



Thanks to its compact design, the EFA-SRT® MS Performance can be seamlessly integrated into confined installation spaces, ensuring maximum operational safety within minimal spatial requirements.



High system availability in practical operation: the EFA-SRT® MS Performance handles up to 400 load cycles per day at the point of use.

### **Publisher:**

EFAFLEX  
Tor- und Sicherheitssysteme  
GmbH & Co. KG  
Fliederstraße 14  
84079 Bruckberg / Germany  
Telephone: +49 8765 82-0  
E-Mail: [info@efaflex.com](mailto:info@efaflex.com)  
[www.efaflex.com](http://www.efaflex.com)



### **Company information EFAFLEX**

EFAFLEX manufactures high-speed doors for industrial applications. Founded in 1974, the company serves clients from industry, skilled trades, food production as well as the chemical and pharmaceutical sectors. As the only manufacturer in the field of high-speed industrial doors, EFAFLEX is listed in the world market leader index and is therefore one of the 461 leading companies in Germany, Austria and Switzerland. The family-owned company employs more than 1,400 people worldwide. With its headquarters in Bruckberg, Bavaria, EFAFLEX is firmly established as the region's largest employer. In addition, the company operates ten subsidiaries on five continents, developing international markets. Over 60 percent of EFAFLEX's revenue is generated abroad.